



## CONTEMPORARY CONCRETE

ENHANCING THE DECOR OF TODAY'S HOTELS

Concrete is Great  
~~Except it Cracks and~~  
~~Stains and It's Too Expensive~~



SONOMA CAST STONE  
CONCRETE INNOVATIONS

[WWW.SONOMASTONE.COM](http://WWW.SONOMASTONE.COM)



# Yes.

With a 48,000 sq-ft production facility,  
Sonoma Cast Stone can handle large jobs.



Thanks for asking!



## STAIN-FREE CONCRETE, INSPIRED DESIGNS & SUPERIOR ENGINEERING

### Award-Winning Sinks in All Shapes and Sizes...

Over the 20-plus years Sonoma Cast Stone has been making concrete sinks and countertops, many of our inquiries have come from restaurant customers who saw one of our products. Imagine liking a sink that much.

Concrete is more than just another surface material. We think that concrete is the best creative medium in the world. It can be any color and hold any shape, and we take full advantage of that versatility by developing fixtures that run the gamut from classic to contemporary, traditional to modern and even whimsical.

Sonoma Cast Stone offers more color choices than any other manufacturer, and if you don't like any of our dozens of natural and designer colors, we will help you create your own custom blend.

We have also funded our own research into concrete formulations at great expense of time and resources, and we believe that the quality of our concrete is unmatched. All of our sinks and countertops are offered in our own NuCrete® Concrete and guaranteed not to stain or crack.

For a stunning and unique design option, ask us about our MetalCrete® finishes. Genuine Copper, Iron, Bronze, and Pewter are permanently bonded to solid concrete. These are real metals, and, unlike NuCrete®, MetalCrete® is a "living" finish. Sinks and countertops with this new surface will show their age proudly in a gathering patina of wear. The old-world ambience of MetalCrete® becomes reminiscent of a venerable tavern or a scene from Game of Thrones.





## STAIN-FREE CONCRETE RESTROOM SINKS





## STAIN-FREE CONCRETE RESTROOM SINKS

### ALL SONOMA CAST STONE SINK STYLES

Can be made ADA Compliant

Are UPC and cUCP Listed, IAPMO Listed

Standard in NuCrete® Concrete

Guaranteed Not to Stain or Crack

Dozens of Natural and Designer Colors





## STAIN-FREE CONCRETE RESTROOM SINKS



2-COLOR CONCRETE RAVESINK DESIGN





## STAIN-FREE CONCRETE RESTROOM SINKS



CUSTOM CIRCULAR CONCRETE RAMPSINK



FLAT-BOTTOM CONCRETE RAMPSINK



THE EXECUTIVE CONCRETE RAMPSINK



THE CHICAGO CONCRETE TROUGHSINK



## STAIN-FREE CONCRETE RESTROOM SINKS





## STAIN-FREE CONCRETE RESTROOM SINKS





## CONCRETE IN THE LOBBY



## THE LOBBY & GUEST SERVICES

### Make A Concrete First Impression...

From the estimate to the installation, your project will be handled by experienced professionals who have been there and done that. We have the tools and the talent... not to mention the 48,000 sq-ft production facility to execute your vision to perfection. The hotel lobby makes the first impression upon guests and sets the tone for the kind of immersive experience you want them to have and to remember. Whether your hotel is modern and urban or classic and traditional, concrete will best convey to your guests your promise of the superlative quality they can expect while in your care.





TRU-EDGE CONCRETE PAVERS

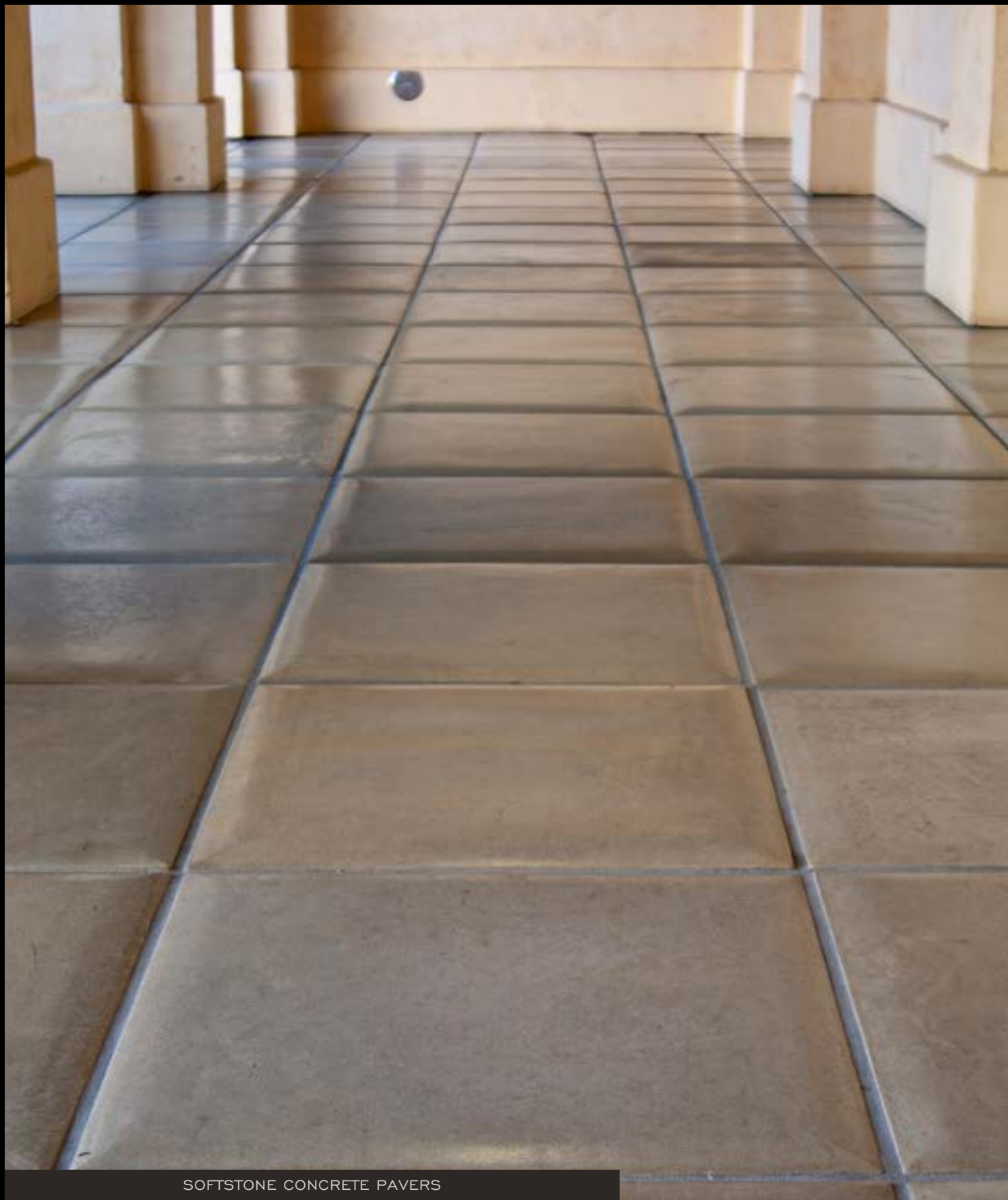


CUSTOM CONCRETE COFFEE SET





BASKETWEAVE CONCRETE PAVERS



SOFTSTONE CONCRETE PAVERS







## ARCHITECTURAL PANELS

### A Concrete Canvas to Paint On

In virtually any color or color combination; available in many sizes. Ideal for shower backs, lobby cladding, flooring, room dividers or countertops, they can also be made as structural panels from  $\frac{1}{4}$ " to 4" thick and as "heat panels" with heating coils cast into the mix and so embedded, out of sight. Sonoma Cast Stone Architectural Panels have all the creative potential of a blank canvas - and then some! Concrete is a marvelous medium for embedded materials and color pigments. It also supports a myriad of textures. Panels also support MetalCrete®, genuine metal finishes.







METALCRETE® CONCRETE CLADDING AT ESTEE LAUDER, NYC



## THE BAR & LOUNGE

### Custom Designs in All Shapes and Sizes...

The bar and lounge comprise a unique location in the hotel which often has its own style conducive to providing a distinctive environment. The bar is where guests meet and gather before and after excursions. It may also be a gathering place for locals who are not guests of the hotel. Sonoma Cast Stone custom concrete countertops shine in the bar. The surface material of the bar itself is obviously very important, often the center of attention. This is the perfect place for us to show you the amazing things we can do with colors, shapes and textures!



## CONCRETE IN THE BAR & LOUNGE





METALCRETE® CONCRETE COUNTER IN BRONZE



METALCRETE® CONCRETE COUNTER IN BRONZE



## CONCRETE IN THE BAR & LOUNGE



METALCRETE® CONCRETE COUNTER IN BRONZE



METALCRETE® CONCRETE COUNTER IN BRONZE



## CONCRETE IN THE BAR & LOUNGE





SONOMA CAST STONE  
CONCRETE INNOVATIONS

## CONCRETE IN THE BAR & LOUNGE



BambooStone



TruEdge



SoftStone Pebble Beach



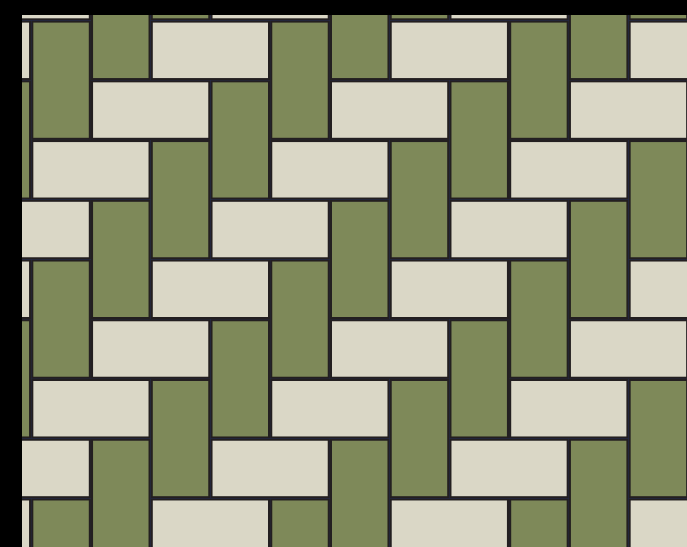
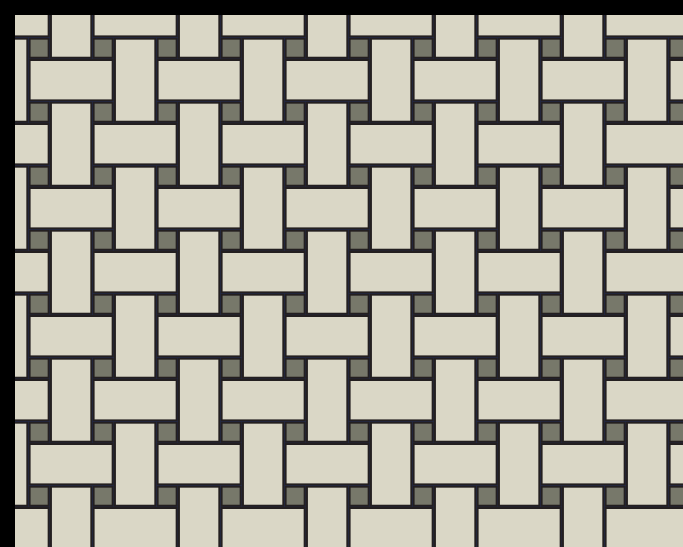
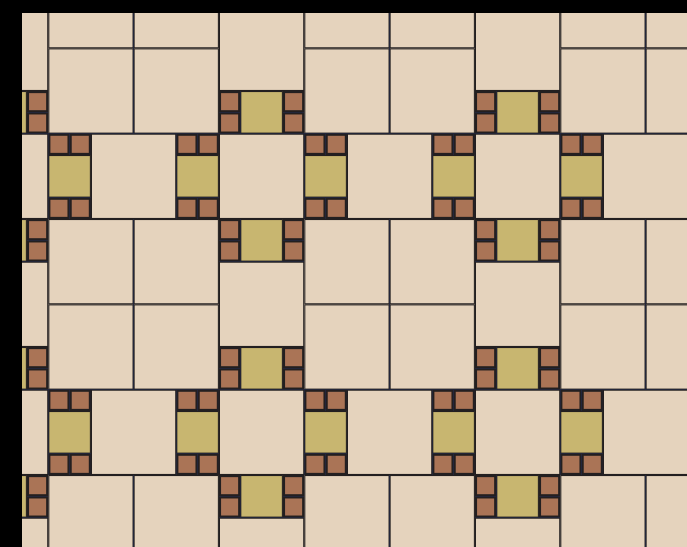
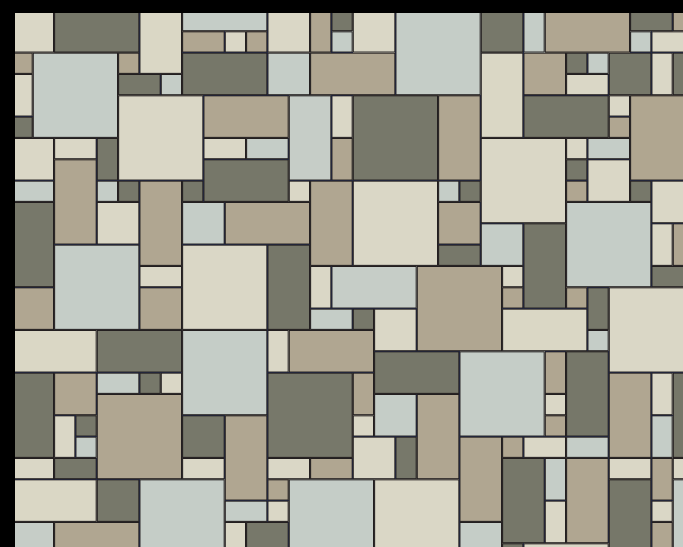
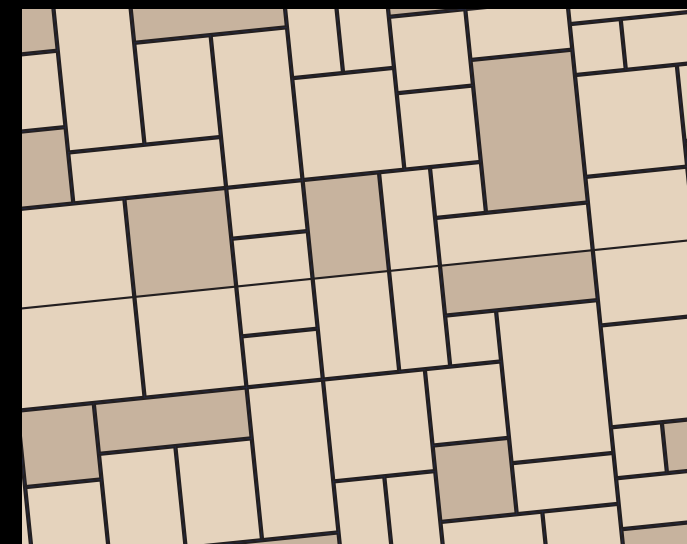
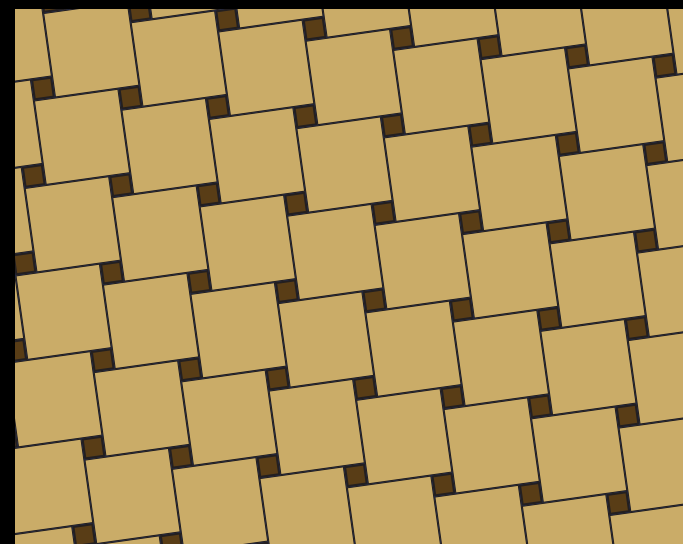
Ottoman



TumbleTiles



SoftStone Appian Way





## DINING & EATERIES



ALL-CONCRETE: TABLE, BAMBOO-STYLE CLADDING AND PAVERS



## DINING & EATERIES

### Does Your Restroom Reflect Your Restaurant?

Sonoma Cast Stone concrete sinks and countertops are made with our NuCrete® finish and resist common stains. NuCrete® is embedded into the concrete surface and never has to be resealed. With minimal care, a NuCrete® surface will remain stain-free and like new for years to come. This will have a noticeable impact in your ease of housekeeping, especially with our sinks. In addition to the easy-clean surface of NuCrete™ concrete, the sinks are all designed with a subtle slope to drain that prevents soapy water from pooling in the basin.





CUSTOM CONCRETE OUTDOOR PIZZERIA



CENTER-PIECE CONCRETE TABLE TOP WITH INTEGRAL BASIN







METALCRETE® TABLETOP IN PEWTER



METALCRETE® TABLETOP IN PEWTER



CONCRETE FRAME W/STEEL INLAY, METALCRATE CLADDING





## RETAIL & SHOPPING

**Make it Memorable with Concrete...**

At Sonoma Cast Stone, you will find a higher quality concrete available in a variety of finishes with more colors than are available anywhere else. Our production staff can handle large orders with the same attention to detail given a single sink. We also provide the custom work to really set your design apart. Concrete is phenomenal in it's capacity for holding any shape or color, and we match that with our own creativity and versatility.



MONOCHROME MOSAIC OTTOMAN TILE











## THE GUEST ROOM

### Make A Concrete First Impression...

Concrete is not like marble or granite. It does not impose its own colors and textures into the decor you develop. Contemporary, architectural concrete is sweepingly versatile and malleable. It can wear any color and hold any shape, and this adaptive quality will encourage and support your creativity. Likewise, Sonoma Cast Stone also offers the kind of flexibility you need to express your vision. We feature more colors and provide more finishes and give the kind of expertise and experience required to fully express your vision in every bespoke detail. All sinks and counters made in NuCrete® are guaranteed stain-free.





CONCRETE GUESTROOM DESK







## CONCRETE IN THE GUEST ROOM



THE ROCKSINK, IN MULTIPLE STYLES



BREAK-THRU VESSELSINK VANITY WITH TEMPERED GLASS



CONCRETE WAVESINK WITH METALCRETE® CLADDING IN COPPER



WATERFALL CONCRETE RAMPSINK AND HARDWOOD STAND





SIDERAMP CONCRETE RAMPSINK



OFURO JAPANESE-STYLE SOAKING TUB



OFURO JAPANESE-STYLE SOAKING TUB



DOUBLE-WAVE CONCRETE TUB WITH CONTOURED INTERIOR



URBAN CONCRETE SOAKING TUB WITH CONTOURED INTERIOR



ON THE GROUNDS



DOUBLE-WAVE CONCRETE TUB WITH CONTOURED INTERIOR

## THE GROUNDS

Nothing Ages so Beautifully as Concrete...

With legendary strength and durability, we find concrete fixtures literally thousands of years old. Contemporary concrete by Sonoma Cast Stone is even more hardwearing and much more colorful. Our concrete creations have the inimitable ability to appear hard as a rock or soft as a pillow, and the gathering patina of wear only enhances their beauty.

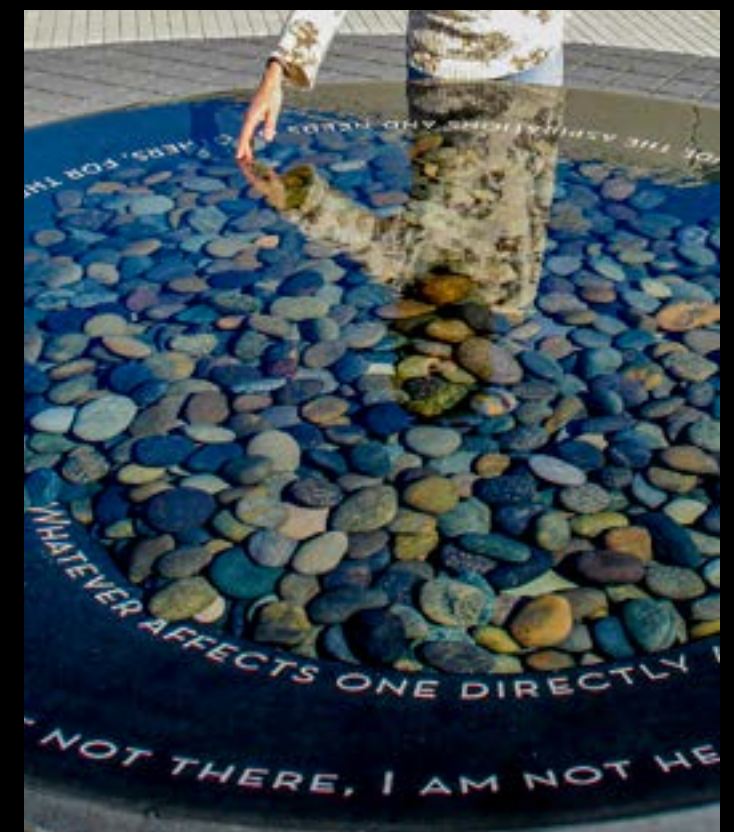




TRANQUILITY TUB IN CLASSIC CONCRETE



ON THE GROUNDS







ALL CONCRETE PING PONG TABLE







## No Other Surface Compares to Concrete

A warm, organic feel and the strength of ages. Concrete can hold any shape, any color—and when you come back for more, we can match the color you got last time. Are you developing a restaurant to evoke the rustic charm of an old-world tavern, or is your hotel in an urban city-center? Do you need the comfort of the classic and traditional or the energy of the contemporary and metropolitan? Concrete is the solution.

From the faint, mottled pattern of the aggregate to the range of textures, finishes and colors, concrete is everything that marble and granite want to be. In terms of both style and utility, concrete just has much, much more to offer.



SONOMA CAST STONE  
CONCRETE INNOVATIONS

CONCRETE IS GREAT!  
~~BUT IT CRACKS AND STAINS~~

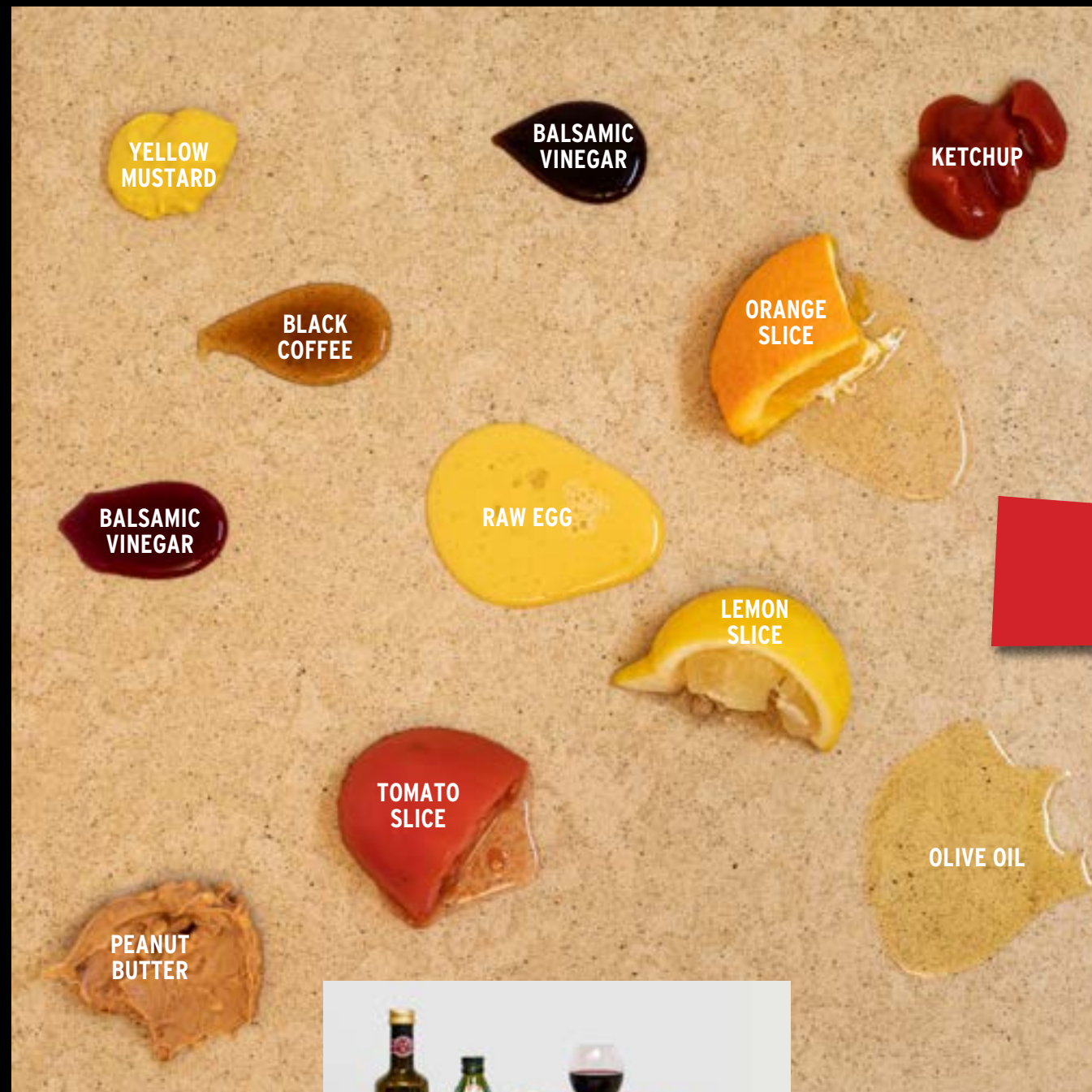


## NuCrete® Concrete is Guaranteed Not to Crack or Stain

Only From Sonoma Cast Stone

Sonoma Cast Stone concrete sinks and countertops are made from NuCrete® Concrete and are guaranteed not to crack or stain. You get everything you love about concrete plus the security of knowing that your fixture is going to stay looking like new. NuCrete® concrete gives you everything you want from concrete, with NO BUTS!

In this test, common, household staining substances were applied to the NuCrete® Concrete tile and left in place for 24 hours.



NUCRETE® N607 MUSHROOM



## NUCRETE® STAIN-FREE CONCRETE FOR EASY MAINTENANCE

The following day, the same NuCrete® Concrete tile was scrubbed completely clean with an abrasive sponge and detergent.



NUCRETE® N607 MUSHROOM





SONOMA CAST STONE  
CONCRETE INNOVATIONS



*MetalCrete®*

## Genuine Metal Finishes on Concrete

Only From Sonoma Cast Stone

MetalCrete® is a fundamentally new surface, and it's very exciting. We permanently embed metal powders into solid concrete. This is the real thing: real Copper, Iron, Bronze, and Pewter. Those are all soft metals, and as such, they will age and show wear. For a surface that wears it's age proudly, taking on the old-world charm of a country tavern, there is literally nothing like MetalCrete®. Can cover a concrete fixture or be used as a stylish accent.



METALCRETE® CLADDING IN COPPER



METALCRETE® RAMPSINKS IN PEWTER



METALCRETE® TROUGHSINK IN IRON



METALCRETE® TROUGHSINK IN BRONZE



# SONOMA CAST STONE

## CONCRETE INNOVATIONS

(877) 283-2400 SALES@SONOMASTONE.COM

WWW.SONOMASTONE.COM

STAIN-FREE NuCRETE® CONCRETE  
N601 STARRY NIGHT