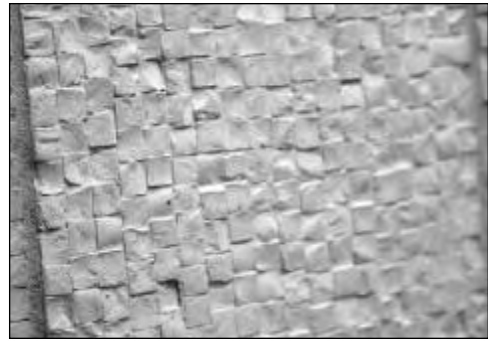




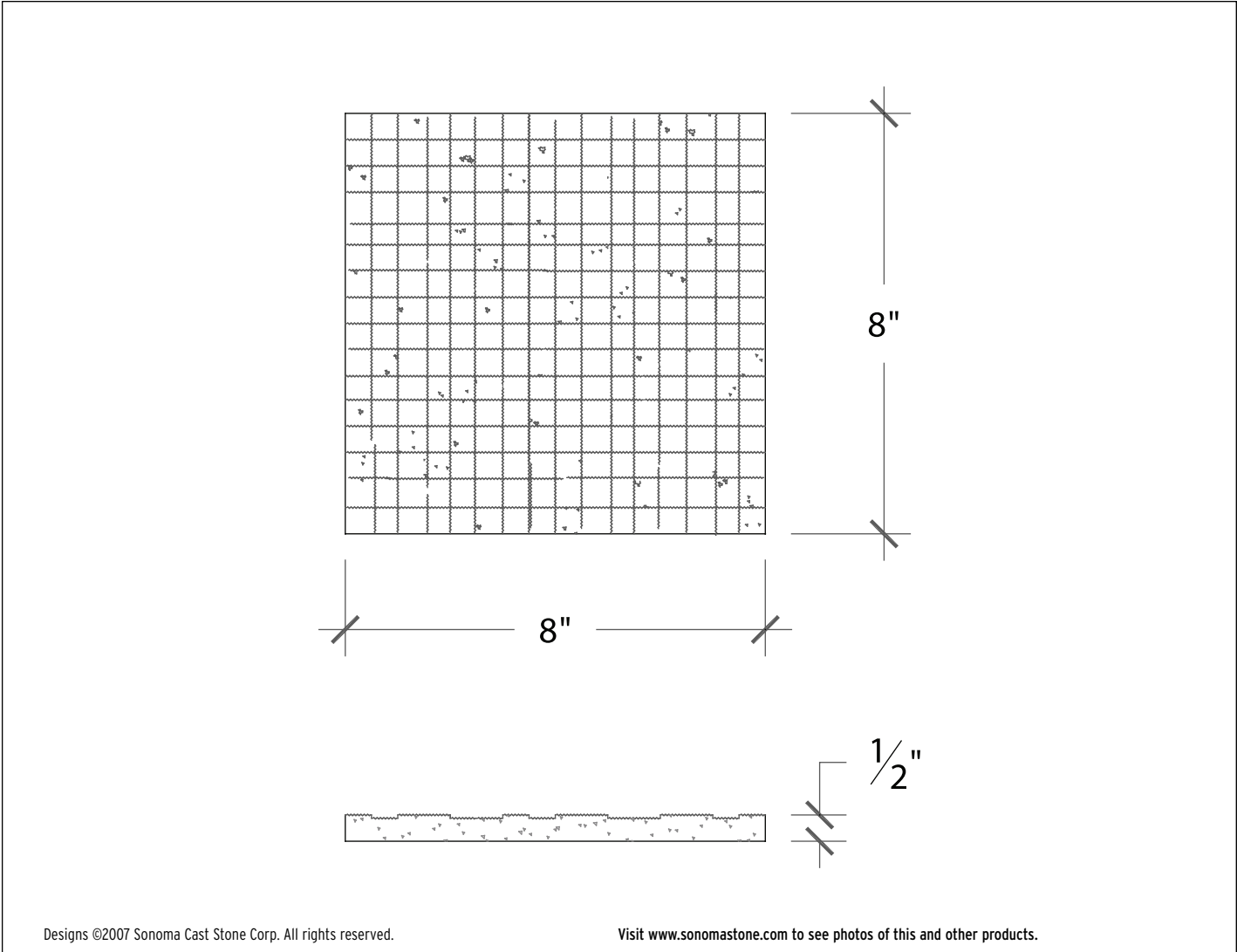
TILES & PAVERS

SONOMA CAST STONE CORPORATION
Makers of NuCrete™, The World's Only Stainless Concrete
877.283.1897 • www.sonomastone.com



For more product info, or to download replacement forms, see: www.sonomastone.com

Tile • Monochrome Mosaic, Ottoman



Designs ©2007 Sonoma Cast Stone Corp. All rights reserved.

Visit www.sonomastone.com to see photos of this and other products.

• DESCRIPTION

Two variations on the theme of an old Greek or Roman mosaic tile. The Ottoman (above) looks like an authentic hand laid mosaic which has been unearthed from an archeological site. With an uneven grid line and skewed squares, one tile does not line up with another - so it is recommended that it be laid with a grout line to separate each tile.

The same concept, done with a modern flair is our Monochrome Mosaic - Urban Style (next page). These squares are exact and alignment can be true with a non-grout flowing line.

Each style has a home with modern to historic or traditional.

Refer to Tile Accessory page for pieces that compliment these tiles (p25).

• FACTS

Tiles come in Classic Concrete in a mold release finish. As the term implies, tiles are "as is" when released from their molds.

Tiles are not diamond-sanded, sealed and waxed.

Tiles are currently not available in Stainless NuCrete™.

24 standard colors. See: www.sonomastone.com, catalog or techbinder. Custom colors available. Order samples online, or call 877-283-2400 x113.

Tiles are unfinished and unsealed. Sealing by installer.

Thin-set mortar can be used to install tiles to solid, level substrate.