



COMMERCIAL SINKS

STAIN-FREE NUCRETE® CONCRETE

Designing The Bath Suite of Your Dreams?

Many of our inquiries come from people who have seen our fixtures in luxury hotels or restaurants and were sufficiently dazzled that they sought us out later.

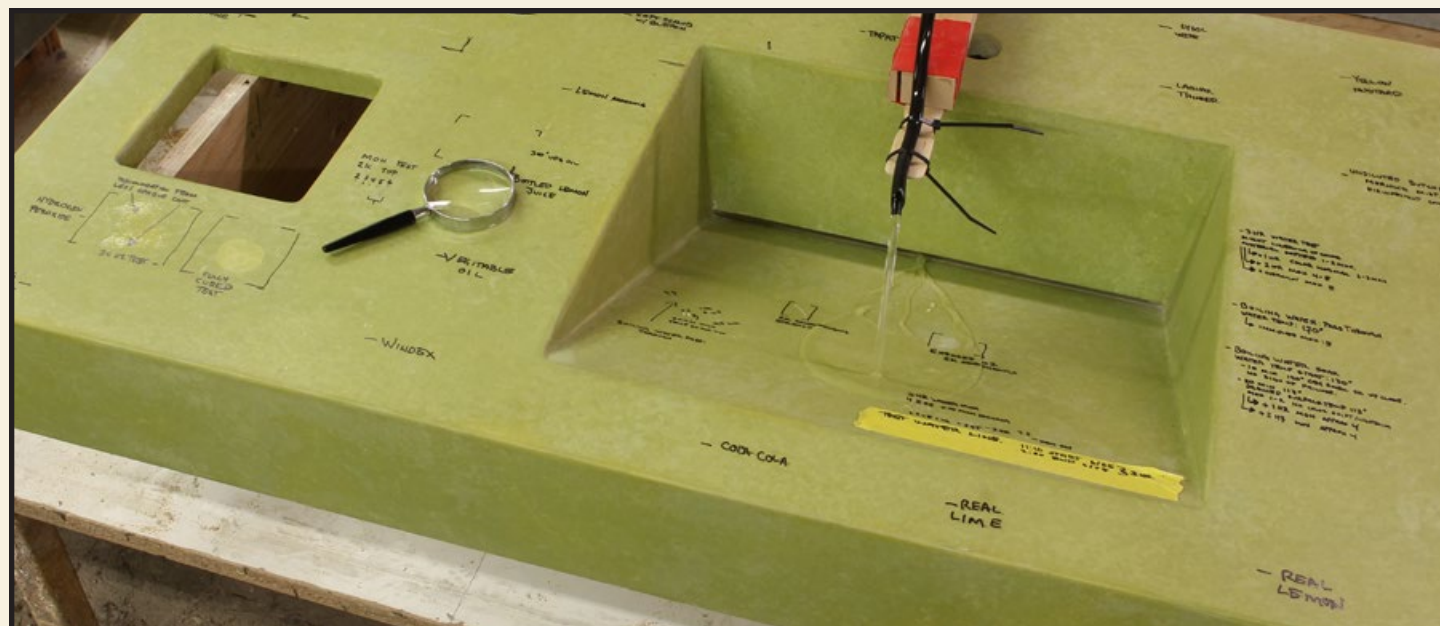
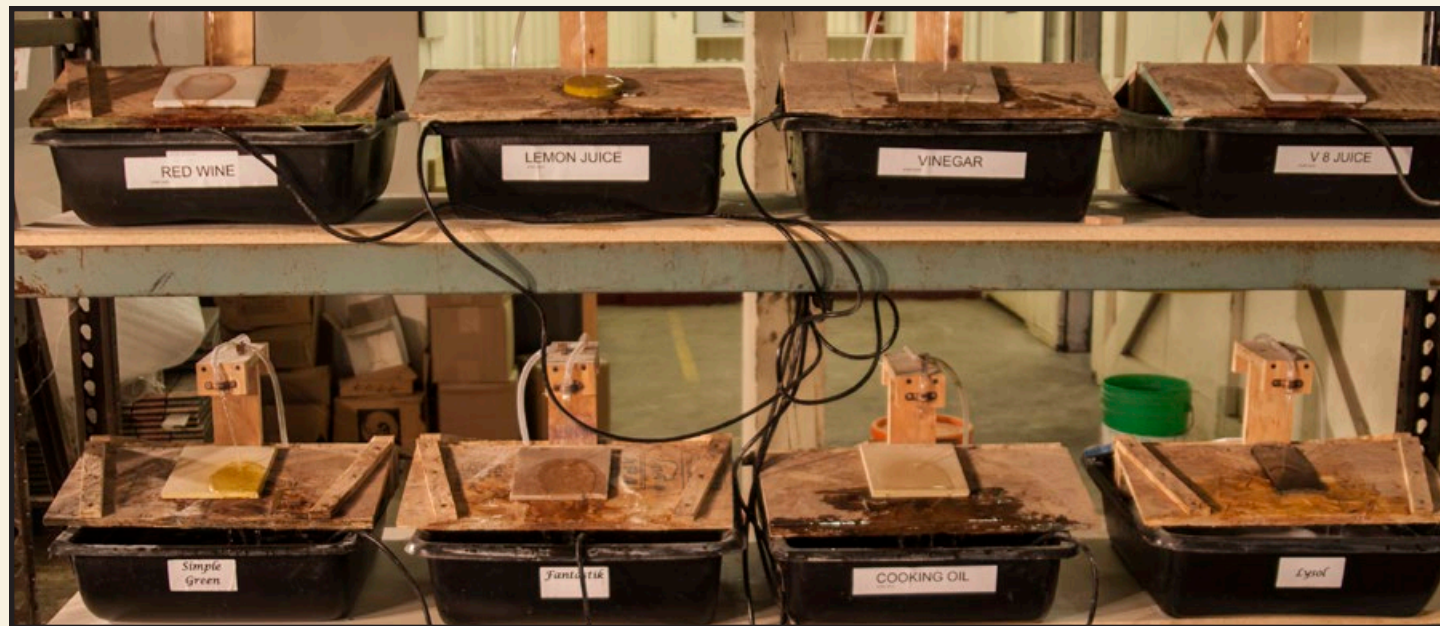
When was the last time you were that impressed by a sink?



SONOMA CAST STONE
CONCRETE INNOVATIONS

WWW.SONOMASTONE.COM 877.283.2400

IN PEWTER METALCRETE®



The World's First Stainless Concrete

WE'VE ELIMINATED THE ONLY REASON FOR NOT USING CONCRETE.

To account for the number of household products that leave a "memory" on standard concrete surfaces, a series of exhaustive tests (including direct exposure to streams of alkaline, acid and oils) were run in developing the NuCrete™ mixture.

Sonoma Cast Stone has perfected the formulas and the manufacturing techniques to produce products that are almost four times stronger than building code requirements.

If you are currently planning a project, fax your schematics, measurements or drawings to us at 707.283.1899, and we'll be happy to provide a free cost estimate of your sinks and countertops done in our stainless NuCrete™.



Sonoma Cast Stone stands at the forefront of concrete innovation by funding research & development for 20+ years.



Ten Shades of Gray

DOZENS OF NATURAL & DESIGNER COLORS

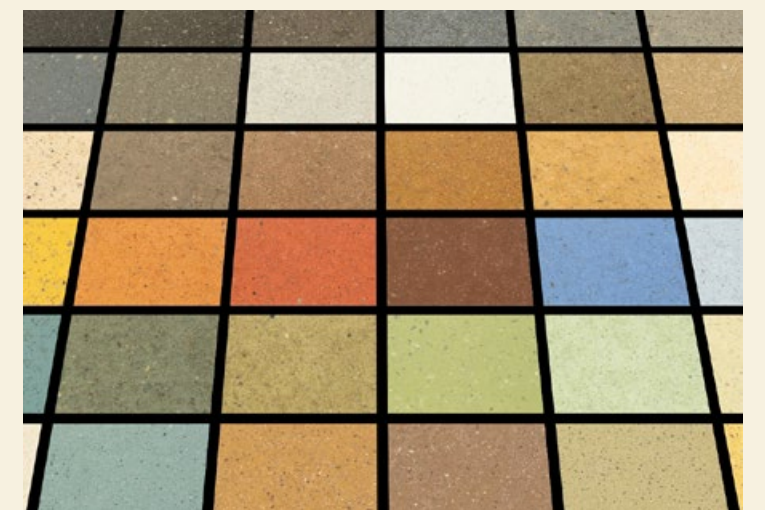
Ask an interior designer if color is important.

Everyone knows that concrete can hold any shape. It can appear as hard as a rock or soft as a pillow. Concrete can also hold any pigment. Not all manufacturers take full advantage of this by doing the work to standardize broad color palettes.

At Sonoma Cast Stone, we can show you a wide range of fabulous natural and designer colors for either our NuCrete® Stain-Free concrete or our Classic Concrete.

And the fixtures will always match! Even if you come back to us years later wanting a new countertop to match the old one, we can do it. Try that with granite or marble.

Sonoma Cast Stone Commercial Sinks are
UPC/cUPC and ADA-Compliant, IAPMO Listed



Sonoma Cast Stone has the most comprehensive color palettes in the industry and offers custom blending.

WWW.SONOMASTONE.COM 877.283.2400



THE WAVESINKS

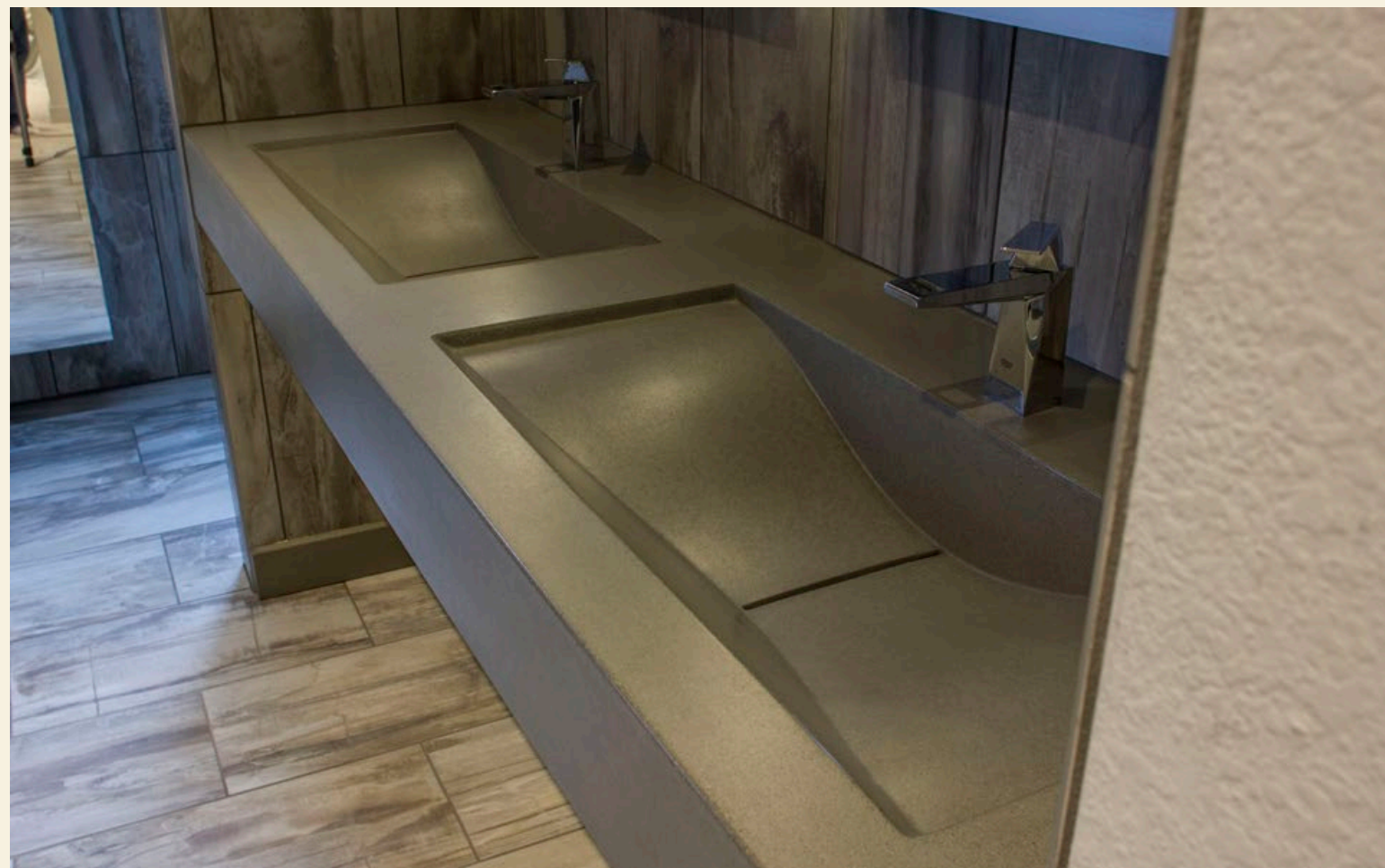
Voted Best New Product of the Year at the National Kitchen and Bath Show being voted Best New Product of the Year. There is no shape better-suited to the bath than this undulating wave. Our multibasin WaveSink is designed to eliminate the soap and water pools found between conventional undermount sinks. Water flows from a wall or deck-mounted faucet into a distinctive slot drain for each basin and into concealed, standard pipe fittings. Available in configurations of up to five basins. Can be mounted on standard cabinetry or "floated" between walls.



- Standard In Nucrete® Stain-Free Concrete
- UPC/cUPC and ADA-Compliant, IAPMO Listed
- Optional Metal Finishes (MetalCrete®)
- Guaranteed Not To Crack Or Leak
- All Products Made in America



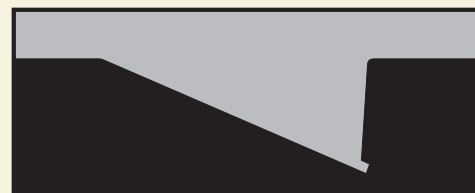






THE RAMPSINKS

Front ramps, back ramps, side ramps, center ramps, all with great possibilities for color coordination. The geometric lines of the Ramp Sink make it a natural selection for the most contemporary of buildings or homes. The RampSink is a favorite of several well-known restaurant chains as the Ramp can range from three feet to over 12 feet in length, As with all Sonoma Cast Stone sinks the RampSink slopes to the drain, allowing very limited flat space for soap and water buildup. Water flows from a wall or deck-mounted faucet into a distinctive slot drain for each basin and into concealed, standard pipe fittings. Available in configurations of up to five basins. Can be mounted on standard cabinetry or "floated" between walls.



- Standard In Nucrete® Stain-Free Concrete
- UPC/cUPC and ADA-Compliant, IAPMO Listed
- Optional Metal Finishes (MetalCrete®)
- Guaranteed Not To Crack Or Leak
- All Products Made in America







WATERFALL RAMPSINK



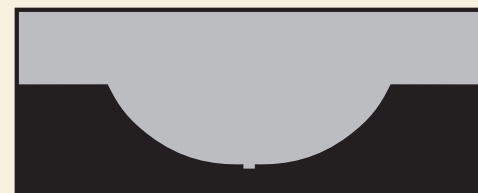


CONCRETE TRAVERTINE TILES



THE TROUGHSINKS

The TroughSink shape is immediately and irresistibly Old World. It harkens back to an outdoor, country laundry basin or watering trough. Our current TroughSink designs, inspired by their vintage counterparts but used in upscale venues and lavish homes, bring the edge of industrial chic expressed solidly in concrete. All of our concrete sinks drain cleanly without pooling. Easy to keep clean! Available in configurations of up to five basins. Can be mounted on standard cabinetry or "floated" between walls.



- Standard In Nucrete® Stain-Free Concrete
- UPC/cUPC and ADA-Compliant, IAPMO Listed
- Optional Metal Finishes (MetalCrete®)
- Guaranteed Not To Crack Or Leak
- All Products Made in America







FAUCETS FROM SONOMA FORGE



SHOWN WITH DOUBLEWAVE CONCRETE SOAKING TUB





IRON-LADY TROUGH SINK



IN-HOUSE METALWORK



PEWTER METALCRETE® FINISH



VESSEL SINKS

These striking sinks combine strength, durability, and beautifully mottled colors with an incredibly smooth, glassy finish. Designed and finished to be exposed above the counter surface. Hand-crafted from all-natural materials, each has its own unique personality. Install these artistic vessel sinks with genuine Sonoma Cast Stone concrete countertops.

All sinks available in genuine MetalCrete®.



- In Classic Concrete
- Optional Metal Finishes (MetalCrete®)
- Guaranteed Not To Crack Or Leak
- All Products Made in America

